



Perinatal  
Consortium  
For  
Educational  
Opportunities



The Website @  
[www.PCEORegion2.org](http://www.PCEORegion2.org)

2012  
Course Offerings  
(January- June)

**Perinatal Consortium for Educational Opportunities (PCEO)** is a collaborative effort of perinatal professionals who represent organizations that provide perinatal services within and surrounding the Region II perinatal outreach area. The goal of PCEO is to provide resources and educational opportunities that enhance the quality of perinatal nursing practice. These programs assist in orientation and competency requirements for member organizations. PCEO acknowledges the support of member hospitals providing contact hours and appreciates the opportunity to co-provide those programs.

### **Registration Information**

- Registration deadline: **TWO WEEKS BEFORE PROGRAM DATE.**  
**(No phone or fax registrations).**
- Registrations must be postmarked no later than the deadline. Classes are cancelled if minimum attendance is not reached **AT DEADLINE.**
- Fees must accompany registration.
- **NO REFUNDS (SUBSTITUTIONS WILL BE ACCEPTED)**
- **Only one person, program and check per registration form**
- Dress to accommodate changes in room temperature.
- **No confirmation will be sent** For email confirmation please email:  
[perinataleducation@childrensdayton.org](mailto:perinataleducation@childrensdayton.org)
- PCEO reserves the right to substitute speakers of equal ability in the event of last minute conflicts.
- Unless otherwise specified:  
**minimum attendance of 10 and maximum attendance of 40.**
- Full refund if course is cancelled.
- Registration begins 30 minutes prior to the class time.

### **Fees**

- Must accompany registration form to assure space in course
  - Includes light morning refreshments and handout materials
  - PCEO member employees / retired employees, \$15\*
  - Non-PCEO participants, \$50\*
  - Students, \$15 (with copy of current student ID)
- \*unless otherwise noted on course pages

**AWHONN 2 Day Workshop: PCEO MEMBERS \$125 NON-PCEO MEMBERS \$175**

**Add \$40.00 if purchasing resource book:**

*Fetal Heart Monitoring Principles & Practices, 4<sup>th</sup> edition*

**AWHONN 1 Day Workshop: PCEO MEMBERS \$95 NON-PCEO MEMBERS \$130**

### **Additional Information**

Newborn Medicine Office/ PCEO  
The Children's Medical Center  
One Children's Plaza Dayton, Ohio 45404-1815  
Phone: 937-641-3414

<b>Table of Contents</b>	<b>Page#</b>
Registration Information	2
Fees	2
Programs and Map listings	3 & 4
Did You Know?	4
Member Organization/Representative List	4 & 5
<b>Programs</b>	<b>6</b>
AWHONN 1-Day Workshop: Advanced Fetal Heart Monitoring Course	7&8
AWHONN 2-Day Workshop: Intermediate Fetal Heart Monitoring Course	9
Basic Electronic Fetal Monitoring	10
Breastfeeding	11
Care of the Intrapartum Patient	12
Case Studies in Fetal Monitoring	13
Going Home with Baby	14
Healthy Girls Go Green	15
Loss, Healing & Hope	16
Neonatal Complications	17
Nursing Care of Mothers & Babies	18
OB Emergencies	19 & 20
Pride and Professionalism	21
S.T.A.B.L.E.	22
Under the Influence	23
What's a Week Worth?	24

<b>Maps/Directions</b>	<b>Page #</b>
Atrium Medical Center, Middletown	26
Children's Medical Center, Dayton	27
Joint Township District Memorial Hospital, St Mary's	28
Mercer Health, Coldwater	29
Miami Valley Hospital, Dayton	30
Southview Hospital, Dayton	31
Upper Valley Medical Center, Troy	32
Wilson Memorial Hospital, Sidney	33
Registration Form	35

## **Did you know?**

“The speakers and planners for these PCEO offerings have indicated that they have no real or perceived conflict of interest that relates to the presentations. There is no commercial support or sponsorship.”

Registration fees for programs developed by PCEO have not been increased since 2003.

***Please note: the fee covers light morning refreshments ,  
printing fees and certificate of attendance.***

## **Member Institutions & Representatives**

Atrium Medical Center, Middletown Marty Cole	513-420-5755 X6036
Clinton Memorial Hospital, Wilmington Mandy Powell	937-283-9680
Good Samaritan Hospital, Dayton Dawn Selby	937-743-7554

Joint Township District Memorial Hospital, St. Mary's Doris Knapke	419-394-3335
Kettering Medical Center, Kettering Peggy Foster Nicole Boswell	937-298-3399 X57443 937-298-3399 X57531
Mary Rutan Hospital, Bellefontaine Karen Tracey	937-592-4015 X 4335
Mercer Health, Coldwater Elaine Wolters	419-678-5670
Miami Valley Hospital, Dayton Sharon Orozco Holly Mallaney	937-208-2654 937-208-2628
St. Rita's Medical Center, Lima Cory Orr	419-226-9882
Springfield Regional Medical Center, Springfield Shirley Wise	937-523-3245
Southview Hospital, Dayton Belen Chandirakanthan Michelle Gnagey	937-401-6136 937-401-6881
The Children's Medical Center, Dayton Shana Thompson Mary Ann Swank	937-641-3414 937-641-3463
Upper Valley Medical Center, Troy Jane Pierce	937-440-4904
Wayne Hospital, Greenville Jodi Fritz	937-547-5755
Wilson Memorial Hospital, Sidney Jana Schnippel	937-498-5494
Wright Patterson Air Force Base Medical Center, Fairborn Capt. Courtney DeSutter Capt. Daisy Rupe Major Sheelah Walker	937-257-1188 937-257-1188 937-257-1283

# ***Programs***



## **AWHONN 1-Day Workshop: Advanced Fetal Heart Monitoring Course**

### ***Description***

The Advanced Fetal Heart Monitoring Course is a one-day workshop focusing on the application of advanced fetal heart monitoring knowledge and skills in intrapartum nursing practice. **It is designed by AWHONN for registered nurses who have successfully completed the AWHONN Intermediate Fetal Heart Monitoring (formerly called FHMPP) two-day workshop**, and builds on the essential knowledge and skills gained through the FHMPP two-day workshop.

### ***Course Objectives***

1. Describe physiologic principles of maternal and fetal oxygen transfer and acid-base balance.
2. Identify physiologic principles underlying fetal heart monitoring.
3. Describe concepts in antenatal testing including analysis and interpretation of biophysical profiles and complex antenatal fetal heart monitoring tracings.
4. Relate physiologic principles to the goals and interventions of antenatal testing.
5. Evaluate interventions for patients undergoing antenatal testing.

**Successful completion of a written examination is required for completing the workshop and earning continuing education credit.**

Participants should review the AWHONN *Fetal Heart Monitoring Principles & Practices, 4<sup>th</sup> edition, NICHD nomenclature*, and their FHMPP workshop outline/notes in preparation for the workshop.

**Contact Hours:** 8 contact hours/6 CMEs  
(Continuing education credit is awarded by AWHONN)

**Faculty:** Region II AWHONN Instructors

**Target Audience:** Participants should have at least three years experience using fetal heart monitoring technology in an intrapartum setting and have successfully completed the FHMPP two-day workshop.

**Maximum Attendance: 24 (Minimum: 10)**

**Date: March 15, 2011**

**Time: 7:30am to 6:30pm**

\* (Registration begins at 7:15am)

**Deadline: February 28, 2011**

**Location: Miami Valley Hospital, Berry 5**

***Registration Fee***

**PCEO Member: \$95.00**

**Non-PCEO Member: \$130.00**

**Requirements:** Managers must approve participant's attendance as indicated by manager signature on registration form.



## **AWHONN 2-Day Workshop: Intermediate Fetal Heart Monitoring Course**

### **Description**

Utilizing NICHD terminology, this two-day course focuses on the application of essential fetal heart monitoring knowledge and skills in intrapartum nursing practice. It is not a course to be used for orientation, but rather for competency validation of experienced health care professionals. Participants analyze case scenarios using key physiologic principles. Completion of written exams and skills evaluations are required for successfully completing the program and earning contact hours. Resource book is necessary for this course and can be borrowed from your OB unit. Preparation in advance by participants is necessary.

**Contact Hours:** 18 contact hours/15.25CMEs.

(Awarded through AWHONN)

**Faculty:** Region II AWHONN Instructors

**Target Audience:** It's recommended that participants have approximately three years experience using fetal heart monitoring technology in an intrapartum setting.

**Maximum Attendance:** 24

**Dates: March 27 & 28** @ Upper Valley Medical Center, Farm House

**Dates: April 27 & 30** @ Atrium Medical Center, 5-A Professional Building

**Time:** 8:00 am - 5:00 pm (Registration begins at 7:30am)

**Deadline: 5 weeks before class date**

This is to ensure participants receive course materials at least 14 days prior to workshop. Borrow your unit's "library copy" of AWHONN's *Fetal Heart Monitoring Principles & Practices, 4<sup>th</sup> edition* or purchase your own copy- \$40.00

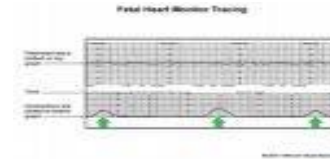
### **Registration Fee**

(Includes course materials)

PCEO Member: \$125.00 **add** \$40.00 -if resource book purchased

Non-PCEO Member: \$175.00 **add** \$40.00 -if resource book purchased

**Requirements:** Managers must approve participant's attendance as indicated by manager signature on registration form.



## Basic Electronic Fetal Monitoring

### **Description**

This introduction course is designed to assist individuals developing competency in fetal heart monitoring. Topics include equipment, indications for monitoring, strip interpretation, documentation and nursing interventions during antepartum and intrapartum periods. There is a hands-on component to this course.

### **Course Objectives**

1. Explain the instrumentation for fetal heart and uterine activity monitoring.
2. Demonstrate the Leopold's maneuver to identify fetal position.
3. Define four components of uterine contractions.
4. Identify the components of the fetal heart rate and associated physiology.
5. Discuss the appropriate nursing interventions for each non-reassuring fetal heart rate pattern.
6. Relate two causes of fetal asphyxia for each of the following: uterine blood flow, placental factors, and fetal factors.
7. Explain various methods of antepartum testing.
8. Discuss the components of clear, concise, defensible reporting and nursing documentation.
9. Differentiate characteristics of reassuring patterns, warning and non-reassuring patterns.

### **Contact Hours: 7.0**

Miami Valley Hospital and Miami Valley Hospital South Health Center (OH-015/04/01/2011) is an approved provider of continuing nursing education by the Ohio Nurses Association (OBN-001-91) an accredited approver by the American Nurses Credentialing Center's Commission on Accreditation.

**Faculty:** Region II AWHONN Instructors

**Target Audience:** Anyone new to the OB field desiring formal introduction to basic electronic fetal monitoring.

**Minimum Attendance: 5**

**Date: February 7, 2012**

**Time: 8:00 am– 4:30 pm**

(Registration begins 7:30 am)

**Deadline: January 24, 2012**

**Location:** Upper Valley Medical Ctr  
Farm House

**Maximum Attendance: 25**

**Date: April 23, 2012**

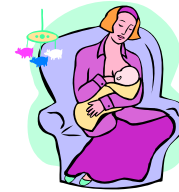
**Time: 8:00 am – 4:30 pm**

(Registration begins 7:30 am)

**Deadline: April 9, 2012**

**Location:** Miami Valley Hospital  
Berry 1

# Breastfeeding



## Description

This course will provide comprehensive, up-to-date, practical information for those who care for breastfeeding moms and babies. Topics include basic anatomy and physiology, proper latch-on and positioning, common problems in the breastfeeding process, issues surrounding supplementation, breastfeeding the premature infant, and how developmental stages affect the breastfeeding infant and toddler.

## Course Objectives

1. Describe the anatomy of the breast, including normal and abnormal variations.
2. Discuss assisting the infant to latch on properly.
3. Identify differences in the composition of preterm milk, mature milk, and colostrum, along with making milk.
4. Describe normal feeding cues and sleep patterns of the neonate.
5. Discuss GOALS and common problems encountered early in the breastfeeding process.
6. Examine and discuss equipment which may be used by the breastfeeding mother.
7. Discuss the issue of supplementation.
8. Describe differences in breastfeeding the premature infant.
9. Describe differences in breastfeeding infants with special problems.
10. Discuss common problems of the breastfeeding infant.
11. Discuss common problems of the breastfeeding mother.
12. Discuss issues surrounding the cessation of breastfeeding.
13. Discuss Baby Friendly Hospital Initiative.

## Contact Hours: 6.8

Grandview Medical Center (OH-072 2-1-12) is an approved provider of continuing nursing education by the Ohio Nurses Association OBN-001-91, an accredited approver by the American Nurses Credentialing Center's Commission on Accreditation.

Co-provided by PCEO.

**Faculty:** Region II Lactation consultants & qualified perinatal healthcare professionals.

**Target Audience:** Perinatal nurses and pediatric nurses working with breastfeeding moms and babies.

**Minimum Attendance:** 5

**Date:** May 17, 2012

**Time:** 8:00 am– 4:30 pm  
(Registration begins 7:30 am)

**Deadline:** May 3, 2012

**Location:** Southview Medical Ctr  
Cafeteria Classroom



## Care of the Intrapartum Patient

### **Description**

This introductory course to labor and delivery theory is designed to prepare the nurse with basic knowledge of the labor and delivery process. Topics include physiology of labor, maternal and fetal assessment, and stages of labor, anesthesia / analgesia and nursing intervention for labor, delivery, and recovery. There is a hands-on component to this course.

### **Course Objectives**

1. Describe the common theories explaining the onset and continuation of labor, as well as the role of the four "P's".
2. Discuss the potential for deviations in the four "P's".
3. Describe the stages and phases of labor and the care of the client during each stage.
4. Discuss the use and interpretation of electronic fetal monitoring.
5. Discuss risk factors that may affect labor outcome.
6. Describe the indications for assisted deliveries and Caesarean sections.
7. Describe the nursing interventions, comfort measures utilized during labor.

### **Contact Hours: 6.3**

Joint Township District Memorial Hospital (UVMC-P-004-96) has been approved as a provider unit of continuing education by the Ohio Board of nursing through the OBN Approver Unit at UVMC OBN-005-92.

**Faculty:** Experienced L&D nurses

**Target Audience:** Orientees to maternity nursing, cross-training personnel and students interested in labor and delivery

### **Minimum Attendance: 5**

**Date:** March 19, 2012

**Time:** 8:00 am– 4:30 pm

(Registration begins 7:30 am)

**Deadline:** March 4, 2012

**Location:** Wilson Memorial Hospital, Sidney  
Lower Level of the Medical Office Building



## Case Studies in Fetal Monitoring

### **Description**

The course is designed to assist nurses in developing and maintaining competency in fetal heart monitoring. There will be a focus on physiology, fetal monitoring strip interpretation, induction / augmentation of labor, chain of command, and legal issues related to fetal monitoring. Case studies, exercises in strip interpretation, lecture, and discussion will be used to review these topics in fetal monitoring.

### **Course Objectives**

1. Correlate fetal monitoring data with underlying physiology.
2. Interpret basic and complex EFM tracings.
3. Describe the implications of cervical ripening, augmentation, and induction of labor on nursing care and fetal monitoring.
4. Discuss case studies in relation to legal ramifications.
5. Analyze case studies in fetal monitoring.

### **Contact Hours: 6.5**

Kettering Medical Center (OH-013, 7/31/2011) is an approved provider of continuing nursing education by the Ohio Nurses Association (OBN-001-91), an accredited approver by the American Nurses Credentialing Center's Commission on Accreditation.

**Faculty:** AWHONN Fetal Monitoring Instructors

**Target Audience:** It is recommended that participants have had a basic fetal monitoring course and approximately one year of clinical experience with fetal monitoring. This course is a good preparation for the AWHONN 2-day course or for certification exam. It is also appropriate for those who have already taken the AWHONN course to use as an update or continued clinical competency.

**Maximum Attendance: 24**

**Date: February 16, 2012**

**Time:** 8:00 am – 4:30 pm (Registration begins 7:30 am)

**Deadline: February 2, 2012**

**Location:** Miami Valley Hospital, Berry 5



## Going Home with Baby

**Description:** In this class we will discuss topics such as the importance of providing discharge education for parents, identifying top reasons for maternal and newborn re-admission, immunizations for baby and mom, the importance of Infant safety, what is normal for baby in the first months and how to help new parents deal with postpartum emotions and when to seek help.

### Course Objectives:

1. Relate the importance of providing discharge education for parents
2. Identify some of the top reasons for maternal and newborn readmissions to the hospital
3. Discuss the importance of immunizations for baby in the first months of live and immunization update for Mom
4. Discuss the importance of infant safety
5. Describe what is normal for baby in the first months
6. Parental needs

### Contact Hours: 6.75

AMC (UVMC P 001.93) has been approved as a provider of continuing nursing education by the Ohio Board of Nursing through the OBN Approver Unit at UVMC OBN-00592.

### Co-Provided by PCEO

**Faculty:** Experienced, qualified healthcare professionals

**Target Audience:** Obstetric nurses practicing on mother-baby or in the office

**Date:** March 7, 2012

**Time:** 8:00 am – 4:00 pm

(Registration begins: 7:30 am)

**Maximum number:** 25

**Deadline:** February 21, 2012

**Location:** Miami Valley Hospital  
Childbirth Education Classroom

# Healthy Girls Go Green



## **Description**

Women's health and Mother Nature: there is a connection. The concerns about environmental chemicals are everywhere. We will bring an awareness of these concerns to women and their families giving information on healthier alternatives while encouraging a more eco-friendly lifestyle. This will be an interactive presentation including the opportunity to learn healthy methods to relax and pamper ourselves and those we love.

## **Course Objectives:**

1. Discuss environmental chemicals affecting women's reproductive health
2. Explain the concerns to menstrual functions with xenoestrogens
3. Define the connection between cancer and environmental exposures
4. Explain the alternatives to reduce negative chemical effects
5. Discuss promotion of cleaner lifestyles
6. List resources for information and research on environmental health

## **Contact Hours: 6.0**

Grandview Medical Center (OH-072 2-1-12) is an approved provider of continuing nursing education by the Ohio Nurses Association OBN-001-91, an accredited approver by the American Nurses Credentialing Center's Commission on Accreditation.

Co-Provided by PCEO

**Faculty:** Donna Walls BSN CPCE IBCLC RN and Anne Brower BSN IBCLC RN

**Target Audience:** anyone interested in becoming informed on how to improve women's health while going green.

**Date:** May 10, 2012

**Time:** 8:00 am – 4:00 pm

(Registration begins: 7:30 am)

**Deadline:** April 26, 2012

**Location:** Southview Hospital  
Cafeteria Classroom



## Loss, Healing & Hope



### Description:

This seminar provides an opportunity for participants to gain an understanding of the needs and feelings of families who experience fetal loss and the importance of memorial photography and mementos. Options of organ and tissue donation will also be discussed.

### Course Objectives:

Review the grief process

1. Discuss communication techniques and interventions useful in caring for bereaved families.
2. Describe the importance of creating memories for grieving families.
3. Discuss the options of organ / tissue donation and perinatal loss.
4. Describe the emotional impact that perinatal loss has on parents and families.

### Contact Hours: 6.5

The Children's Medical Center (OH-042/6/1/14) is an approved provider of continuing nursing education by the Ohio Nurses Association (OBN-001-91), an accredited approver by the American Nurses Credentialing Center's Commission on Accreditation.

The Children's Medical Center, Dayton is an approved Counselor and Social Worker CPE provider (#RCS090502) by the State of Ohio Counselor, Social Work & Marriage and Family Therapist Board (1/13).

Co-provided by PCEO

**Faculty:** Qualified healthcare professionals

**Target Audience:** Nurses and other healthcare professionals working any aspect of maternal/child in a hospital, office or clinic setting who provide care to grieving parents/families.

**Date:** May 22, 2012

**Time:** 8:00 am - 4:30 pm

(Registration begins at 7:30AM)

**Deadline:** May 8, 2012

**Location:** Dayton Children's Development Conference Room



# Neonatal Complications

## **Description**

This program was developed to help nurses and others who work with newborns to quickly identify infants at risk for problems during transition, to observe them more closely for complications, or to refer them for further care.

## **Course Objectives**

1. Name some maternal and intrapartum factors that place infants at risk for health problems.
2. Describe the appearance of infants of different sizes and gestations. [SGA, LGA, IDM, Premature, Post-mature]
3. Review common types of birth trauma, presentation and treatment.
4. Discuss the American Academy of Pediatrics recommendations for the treatment of jaundice.
5. Name 3 newborn respiratory illnesses and the cause for each.
6. Recall signs and symptoms of sepsis in the newborn.
7. Describe some symptoms of opioid withdrawal in the newborn.
8. Identify presenting symptoms of a newborn with congenital heart disease.

Contact Hours: **6.0**

The Children's Medical Center (OH-042/6/1/14) is an approved provider of continuing nursing education by the Ohio Nurses Association (OBN-001-91), an accredited approver by the American Nurses Credentialing Center's Commission on Accreditation.

Co-provided by PCEO

**Faculty:** Dayton Children's Neonatal Nurse Practitioners

**Date:** March 2, 2012

**Time:** 8:00 am to 4:15 pm

(Registration begins at 7:30 am)

**Deadline:** February 16, 2012

**Location:** Dayton Children's Outpatient Conference Room A



# Nursing Care of Mothers & Babies

## *Description*

This introductory course to mother/baby assessment and care is designed to prepare the nurse with basic knowledge for care during the first 48 hours after delivery. Topics include maternal assessment and physiology, newborn assessment and physiology, safety and security, support of the breastfeeding or bottle feeding mother-baby dyad, and fulfilling initial education needs for the new family.

## **Course Objectives**

1. Discuss the nursing process related to maternal care in the first 24 to 48 hours.
2. Discuss the nursing process related to newborn care in the first 24 to 48 hours.
3. Describe the nursing process related to care of the family experiencing an unexpected outcome of pregnancy.
4. Describe basic guidelines for assisting mothers with breastfeeding and bottle-feeding.
5. Describe educational needs for the new family in the immediate postpartum period.
6. Discuss methods of assessing individual educational needs of the new family.
7. Discuss methods of presenting needed information to new mothers/families.
8. Describe techniques for evaluating effectiveness of teaching of family.
9. Discuss maintaining the safety and security of the infants.

## **Contact Hours: 6**

This offering has been approved by the Ohio Board of Nursing through the OBN Approver Unit at Upper Valley Medical Center OBN-005-92).

**Faculty:** Experienced mother/baby nurses

**Target Audience:** Orientees to maternity nursing, cross-training personnel, students interested in mother/baby care.

**Minimum Attendance:** 5

**Date:** February 22, 2012

**Time:** 8:00 am – 4:00 pm

(Registration begins 7:30 AM)

**Deadline:** February 8, 2012

**Location for both dates:**

Upper Valley Medical Center, Troy Main hospital- conference rooms A&B

**Date:** August 22, 2012

**Time:** 8:00 am – 4:00 pm

(Registration begins 7:30 AM)

**Deadline:** August 8, 2012



## OB Emergencies

### Description:

This program was developed to help nurses in emergency situations in obstetrical areas. This class will offer emergency scenarios and interactive participation with the attendees. The topics will include: Malignant Hyperthermia; Eclampsia in Hypertensive Patient; Maternal Hemorrhage in the Intrapartum & Postpartum Periods; Shoulder Dystocia; & Mock Code – ACLS OB Review.

### Course Objectives:

1. Malignant Hyperthermia (MH):
  - Define MH & its prevalence in 2009.
  - Review the nurses' role in MH emergency.
  - Identify what is needed in MH emergency cart.
2. Eclampsia in the Hypertensive Patient:
  - Define the epidemiology & risk factors of hypertensive disorders in pregnancy.
  - Describe the priorities for treatment & management of care.
  - Explain the guidelines for anticonvulsant & antihypertensive therapy.
3. Obstetrical Hemorrhage:
  - Identify the signs of hemorrhage using the ABC's.
  - Describe the causes of maternal hemorrhage in the intrapartum and postpartum periods.
  - Describe the interventions for treating hemorrhages.
  - Review the basics for a crash c-section.
4. Shoulder Dystocia (SD):
  - Define SD & the risk factors associated with it.
  - Describe actions & maneuvers to be taken when SD occurs.
  - Describe documentation timelines when treating SD.
5. Mock Code- ACLS OB:
  - Describe the physiologic changes of pregnancy that may affect resuscitation.
  - Identify the different interventions used for a pregnant woman during resuscitation.
  - Identify the nurses' responsibilities in a mock code.

**Contact Hours: 6.8**

Grandview Medical Center (OH-072 2-1-12) is an approved provider of continuing nursing education by the Ohio Nurses Association OBN-001-91, an accredited approver by the American Nurses Credentialing Center's Commission on Accreditation.

**Co-provided by PCEO**

**Faculty:** Qualified and experienced L&D nurses and a Surgical Nurse Educator.

**Target Audience:** All perinatal nurses and nursing students interested in care of the obstetrical patients in emergency situations.

**Maximum Attendance: 21**

**Date: May 23, 2012**

**Time:** 8:00 AM – 4:30 PM  
(Registration begins 7:45 AM)

**Deadline: May 9, 2012**

**Location:** Southview Hospital,  
Cafeteria Classroom



## Pride and Professionalism

**Description:** This course is designed to promote pride and embrace nursing professionalism. Evidence-based practice, leadership roles, mentoring, customer service, and safe floating are just a few of the hot topics that will be discussed in this exciting new course! This course will also fulfill the ongoing requirements from the Ohio Board of Nursing for 1 contact hour of continuing education on Ohio's Nurse Practice Act.

### Course Objectives

1. Discuss the professional role when precepting or mentoring.
2. Identify ways to create a positive work environment.
3. Demonstrate the importance of customer service.
4. Review professional accountability.

**Contact hours:** For information regarding contact hour approval, please call Jane Pierce 937-440-4904.

Co-provided by PCEO

**Faculty:** Nurses functioning in leadership roles in Region II

**Target Audience:** RNs working toward or in leadership roles. Much of the content will be applicable for nurses working outside perinatal specialties.

**Minimum Attendance: 10 Maximum: 25**

**Date: April 17, 2012**

**Time:** 8:00 AM to 4:00 PM (Registration begins at 7:30 AM)

**Deadline: April 4, 2012**

**Location:** Upper Valley Medical Center  
Farm House



## S.T.A.B.L.E.

### Description

This offering is designed to assist the nursery RN (RTs & L&D RNs also) in the stabilization of the critical infant, after resuscitation, until transfer or recovery. The STABLE acronym stands for sugar, temperature, airway, blood pressure, labs, and emotional support.

### Course Objectives

1. Identify neonates at risk for hypoglycemia.
2. Recall ways that infants lose body heat, especially in the delivery room.
3. Describe how to evaluate respiratory distress.
4. Recall some signs and symptoms of shock.
5. List the clinical signs of sepsis.
6. Calculate the absolute neutrophil count (ANC) and immature to total (I/T) ratio.
7. Relate ways that you can support parents of ill/premature infants.

### Contact hours: 6.25

The Children's Medical Center (OH-042/6/1/14) is an approved provider of continuing nursing education by the Ohio Nurses Association (OBN-001-91), an accredited approver by the American Nurses Credentialing Center's Commission on Accreditation.

Co-provided by PCEO

**Faculty:** CMC Experienced NICU RNs or Neonatal Nurse Practitioners

**Target Audience:** RNs & RTs with at least 3-6 months experience in the care of newborns.

**Minimum Attendance: 10 Maximum: 40**

**Date: January 13, 2012**

**Time:** 8:00 am to 4:30 pm

(Registration begins at 7:30 am)

**Deadline: December 30, 2011**

**Location:** Joint Township District

Memorial Hospital, St. Mary's

Conference Room 1&2

**Date: May 25, 2011**

**Time:** 8:00 am to 4:30 pm

(Registration begins at 7:30 am)

**Deadline: May 11, 2011**

**Location:** Dayton Children's

Outpatient Conference Room C

- **Recommended to have 3-6 months experience in the care of newborns.**
- **Learners are recommended to bring a calculator and paper for note-taking.**
- **Learner's Manuals may be borrowed at the course and are the only materials available for this course**



## Under the Influence

### **Description**

This course is designed to cover a variety of influences that women may experience during pregnancy and beyond. The course is designed to cover the beneficial uses of herbs in pregnancy, delivery, postpartum and breastfeeding. The course will also discuss substance abuse during pregnancy, the implication for the mother and newborn. Treatment options for the mother will also be reviewed. The course will also discuss the role of domestic violence and adoption.

### **Course Objectives**

1. Discuss identification, management and treatment options of perinatal substance abuse for the pregnant mother and neonate.
2. Describe the dynamics of domestic violence and how the health care providers can assist domestic violence victims.
3. Identify common herbs and risks/benefits used in pregnancy and lactation.
4. Discuss how to integrate standard of hospital care with the current trends in adoption and balance client choice, confidentiality, patient care and medical information.

### **Contact Hours:**

For information regarding contact hour approval please contact Mandy Powell at 937-283-9980

**Faculty:** Qualified healthcare professionals

**Target Audience:** Nurses, social workers, and other healthcare professionals working any aspect of obstetrics in a hospital, office, or clinic setting.

**Date:** April 19, 2012

**Time:** 8:00 AM to 4:30 PM  
(Registration begins: 7:30 AM)

**Deadline:** April 4, 2012

**Location:** Miami Valley Hospital, Childbirth Education Classroom



## What's a Week Worth?

### A review of the late pre-term infant

#### **Description**

This course will provide an overview of the anatomy, physiology, development, and common issues encountered by late pre-term infant. This course compliments the PCEO course Before 39 Weeks.

#### **Course Objectives**

1. Name at least 3 risks for the late preterm infant.
2. Identify 3 respiratory problems that more commonly affect the late preterm infant.
3. List some nursing interventions to prevent hypothermia in the late preterm infant.
4. Describe risk factors for hypoglycemia in the late preterm infant.
5. List steps to reduce the risk of complications due to hyperbilirubinemia.
6. Name some nursing interventions to assist a mother with breastfeeding her late preterm infant.
7. Describe feeding strategies to aid the late preterm infant.

#### **Information**

##### **Contact hours: 6.5**

The Children's Medical Center (OH-042/6/1/14) is an approved provider of continuing nursing education by the Ohio Nurses Association (OBN-001-91), an accredited approver by the American Nurses Credentialing Center's Commission on Accreditation.

Co-provided by PCEO

**Faculty:** Experienced level III NICU RNs and/or neonatal nurse practitioners

**Target Audience:** Nurses, nursing assistants, respiratory therapists, and other healthcare professionals caring for infants born in the late pre-term period.

**Minimum attendance: 10**

**Date: April 16, 2012**

**Time:** 8:00 am – 4:00 pm  
(registration begins at 7:30 am)

**Deadline: April 2, 2012**

**Location:** Mercer Health, Coldwater  
Meeting Room 1

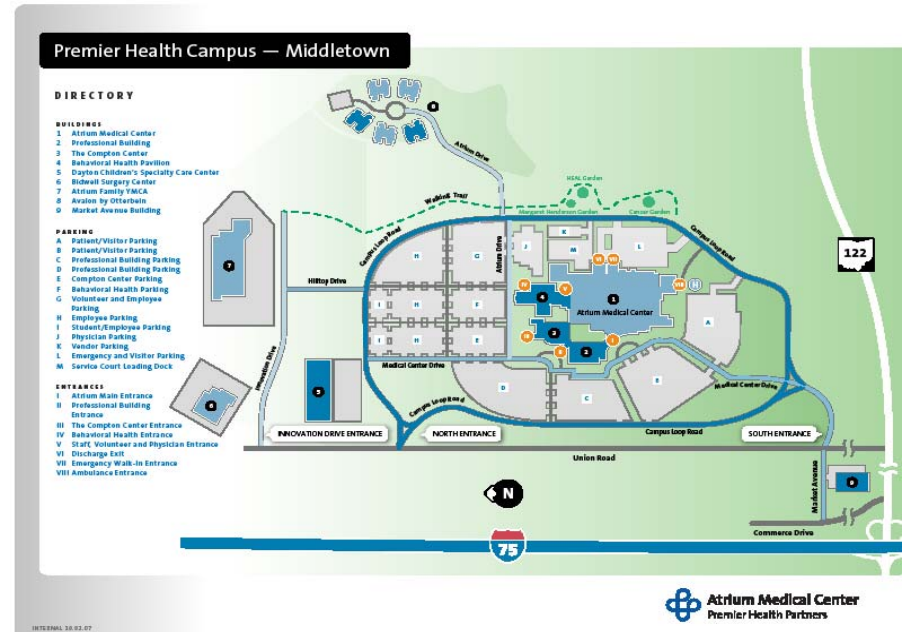
# *Maps*

# Atrium Medical Center Middletown, Ohio

[www.atriummedcenter.org](http://www.atriummedcenter.org)

Driving Address: One Medical Center Dr., Franklin, OH 45005

Mailing Address: PO BOX 8810 Middletown, OH 45042



**From South:** I-75 North to the Middletown exit (Route 122). Turn left and go East on State Route 122. Turn left at Union Road. Atrium Medical Center located on your right. The first entrance is the South entrance and the second is the North entrance.

**From North:** I-75 South to the Middletown exit (Route 122). Turn left and go East on State Route 122. Turn left at Union Road. Atrium Medical Center located on your right. The first entrance is the South entrance and the second is the North entrance.

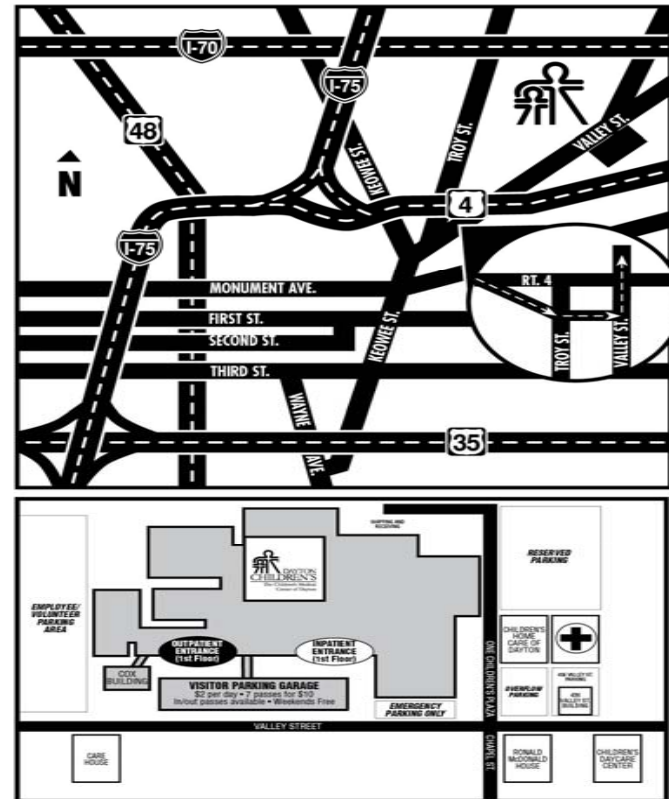
## Direction to classrooms:

**Auditorium-** Turn into the North Entrance, and park in the Professional Building parking lot. Enter into the Professional Building. Take the elevators located to the right of the Middcare pharmacy to the 5<sup>th</sup> floor. Turn right then left out of the elevators. Auditorium is on the left at the end of the hallway.

**Conference 3B/C-** Turn into the South Entrance, and enter into the main hospital lobby. Take the elevators to the 3<sup>rd</sup> floor. Turn right out of the elevators. Conference B/C is located next to the Family Birth Center waiting area.

## Children's Medical Center, One Children's Plaza, Dayton, Ohio 45404

[www.childrensdayton.org](http://www.childrensdayton.org)



\*For best results if using Map quest or another service to get your driving directions to Dayton Children's -- enter 730 Valley Street, Dayton, Ohio, 45404 as the address for Dayton Children's

**\*Parking:  
\$2.00/day**

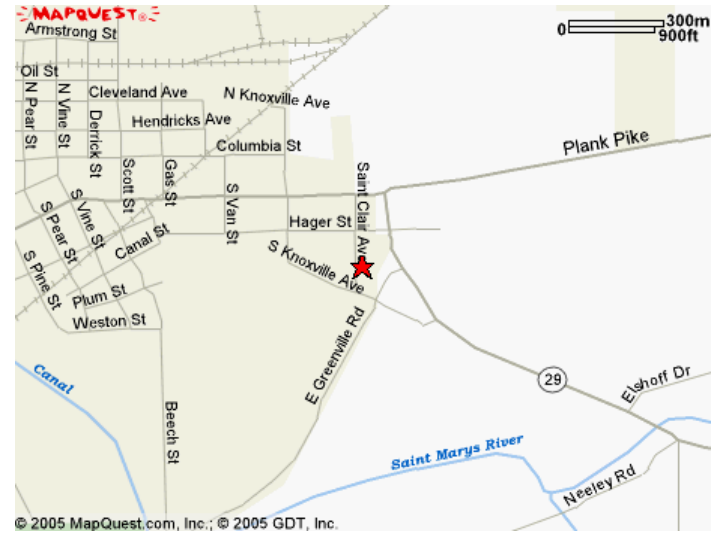
From the north: I-75 south to Exit 56, Stanley Avenue. At the bottom of the exit, turn LEFT and follow Stanley Avenue east about 1 mile. Just before SR 4 (you will see it in front of you), turn RIGHT on Valley Street. Follow Valley Street about one-half mile. Dayton Children's is on the left.

From the south: I-75 north to the Stanley Avenue exit. Turn right on Stanley Ave. Follow Stanley Ave. until Valley Street. Turn right on Valley Street. Or I-675 north, Exit 13 to Rt. 35; west on Rt. 35 to the Keowee St. exit; right on Keowee to Valley St.; right on Valley St.

From the east: Rt. 35 west to the Keowee St. exit; right on Keowee St. to Valley St.; right on Valley St. From I-70 Exit 41, take Rt. 4 south to Stanley Ave./Findlay St. exit. Turn right at bottom of exit, then left at the first light on Stanley Ave. This is Valley St.

From the west: Third St. east to Keowee St.; left on Keowee St. to Valley St.; right on Valley St.

## Joint Township District Memorial Hospital, St. Mary's, Ohio



[www.grandlakehealth.org](http://www.grandlakehealth.org)

### **From the North and South:**

Take I-75 to 33 West (Exit 110) at Wapakoneta.  
Follow Rt 33 West for 8 miles to Townline-Kossuth Road  
Turn left on Townline-Kossuth Road  
Take Townline-Kossuth Road to 33A (Plank Pike) and turn right.  
Hospital is on the left just as you get into town.

### **From the East:**

Take 33 West past Wapakoneta about 8 miles  
Turn left on Townline-Kossuth Rd.  
Take Townline-Kossuth Road to 33A (Plank Pike) and turn right.  
Hospital is on the left just as you get into town.

### **From the West:**

Take Rt.29 East to Rt. 66  
Take Rt. 66 South  
Go the second traffic light (Spring St.) and turn left  
Follow Spring St. to St. Clair and turn right  
Arrive at the hospital.

419-394-3335

**Mercer County Community Hospital  
800 W Main Street Coldwater, Ohio 45828**



***Emergency phone number the day of the program:  
419-678-2341***

**From the North (on I-75 south):**

At Wapak, exit at "St. Mary's" Rt 33 exit  
Go west on St. Rt. 33  
St. Rt. 33 and St. Rt. 29 will merge. Remain on St. Rt. 29 West until Celina  
In Celina turn left on St. Rt. 127 South (Main St.)  
Continue south on St. Rt. 127 until you reach St. Rt. 219  
Turn right (west) onto 219 (you should see the hospital sign)  
Stay on 219 through Coldwater  
The hospital is located on the right side of the highway on the outskirts of town.

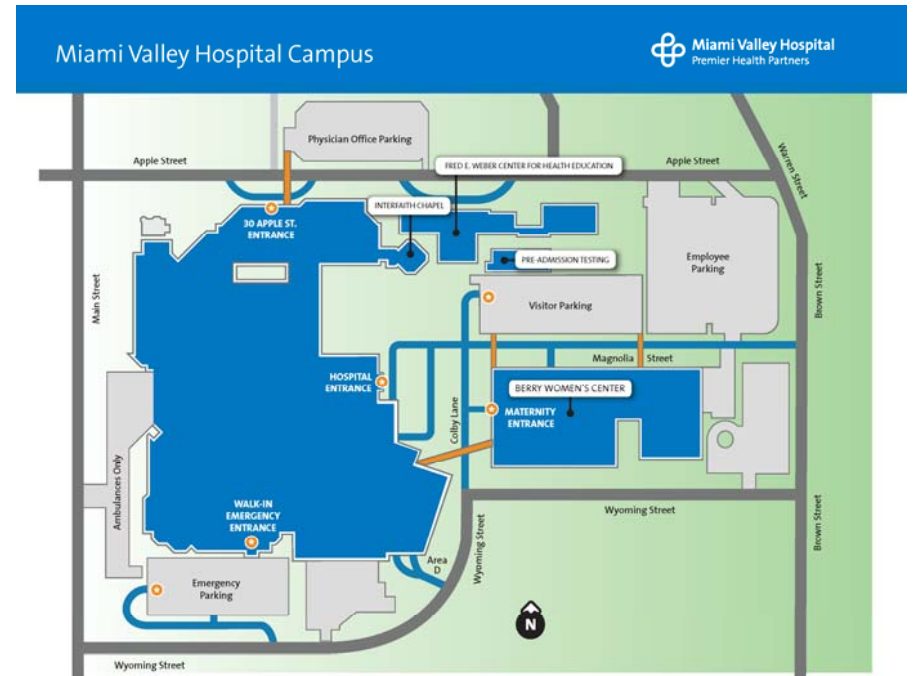
**From the South (on I-75 north):**

Exit at the last Sidney Exit, "St. Mary's/Rt. 29"  
Turn left onto Rt. 29  
Stay on this route until you reach St. Rt. 274 (about 15 miles) and turn left  
Follow 274 through New Bremen until you reach U.S. Rt. 127  
(274 dead ends into 127 and turn right  
Take 127 to St. Rt. 219 and turn left (you should see the hospital sign)  
Stay on 219 through Coldwater  
The hospital is located on the right side of the highway on the outskirts of town.

**Classrooms are just inside the main entrance to the right.**

Please park on the west side of hospital.

**Miami Valley Hospital One Wyoming St.  
Dayton, OH 45409**  
[www.miamivalleyhospital.org](http://www.miamivalleyhospital.org)



**From the north:** Take I-75 south to U.S. 35 east (exit 52B – Xenia). Continue east on U.S. 35 to the Main-Jefferson exit (this ramp exits left). Turn left at Jefferson Street and follow Jefferson/Warren streets to the hospital.

**From the south:** Take I-75 north to U.S. 35 east (exit 52B – Xenia). Continue east on U.S. 35 to the Main-Jefferson exit (this ramp exits left). Continue as "From the north."

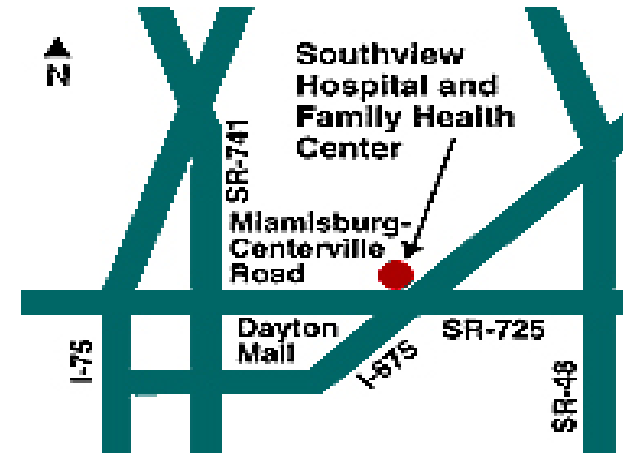
**From the east:** Take I-70 west to I-675 south (exit 44). Continue on I-675 to U.S. 35 west (exit 13B – Dayton). Take U.S. 35 west to the Main-Jefferson exit. Continue as "From the north."

**From the west via I-70:** Take I-70 east to I-75 south. Continue as "From the north."

**From the west via U.S. 35:** Take U.S. 35 east, past the I-75 interchange, to the Main-Jefferson exit (this ramp exits left). Continue as "From the north."

**Parking: \$3.00 a day**

## Southview Medical Center, Dayton, Ohio



**Southview Medical Center**  
1997 Miamisburg-Centerville Rd. Dayton, Ohio 45459

### Directions:

Take I-75 to I-675 to Exit 2, State Route 725. Make a left onto State Route 725. At the second light, make a right into the hospital entrance. Alternative route: Off I-75. Take exit 44 off I-75 East onto St. Rt. 725, pass the Dayton Mall. The hospital entrance is before I-675 on the Left side.

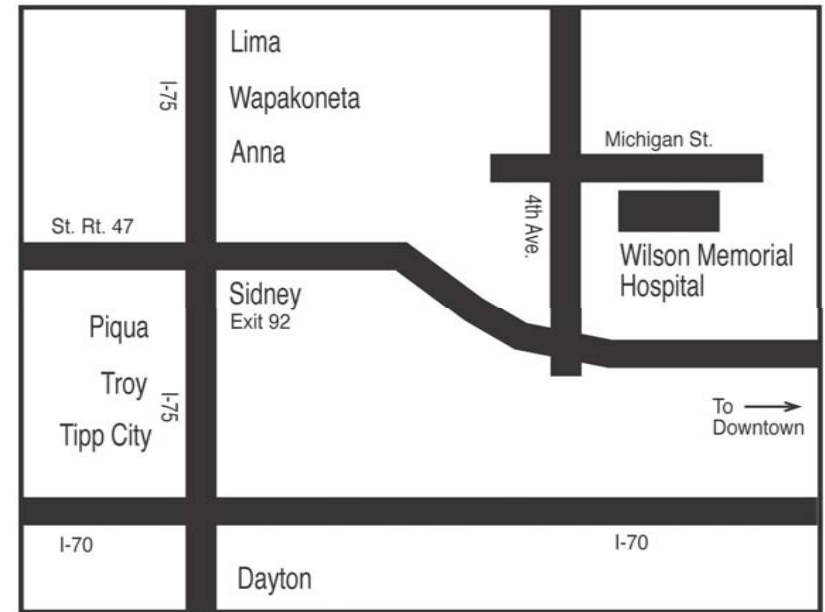
[www.khnetwork.org](http://www.khnetwork.org)

Emergency Number the day of the program: 937-401-6850  
(Please park in visitors parking, NOT in front of Women's Center. Enter through Main Entrance and follow the signs to classroom.)



## Wilson Memorial Hospital, Sidney, Ohio

[www.wilsonhospital.com](http://www.wilsonhospital.com)



**Wilson Memorial Hospital 915 Michigan St.**

**Sidney, Ohio 45356**

**From the South and North: Take I-75 to exit 92. Turn East onto St.Rt. 47. At the second light turn left onto Forth Ave. At the next light turn right onto Michigan St. Turn right into the hospital.**

**From the East: Take St. Rt. 47 West into Sidney. Stay on St. Rt. 47 through downtown Sidney. Turn right at Fourth St. At the next light turn right onto Michigan St. and turn right into the hospital.**

**West: Take St. Rt. 47 East into Sidney. Go through five lights. At the sixth light turn left onto Fourth St. At next light turn right onto Michigan St. and turn right into hospital.**

**Emergency phone number the day of the program:**

**937-498-2311 or 1-800-589-9641**

**(Classes are held in the lower level of the Medical Office Building. Park in the front parking lot, the Medical Office Building is on the right, adjacent to the main entrance.)**



# PCEO Registration Form

**FEES**

\$ 15 Member  
\$ 50 Non-member

*Please copy registration form if necessary.*

***One person, one program, one check per registration form. Thank you.***

Program Title \_\_\_\_\_

Program Date: \_\_\_\_\_

Name \_\_\_\_\_ Title (RN, SW, etc.) \_\_\_\_\_

Home Address \_\_\_\_\_

City/State/Zip \_\_\_\_\_

Daytime Phone \_\_\_\_\_

*For email confirmation-- email Alicia @ LinkA@childrensdayton.org*

Employer: \_\_\_\_\_

Manager \*: \_\_\_\_\_

***\*Manager signature required for AWHONN courses and NRP Instructor course***

Please indicate special needs \_\_\_\_\_

**Course fee amount enclosed \$ \_\_\_\_\_ \*\***

**\*\*See course description for appropriate fee information**

Retired employee -- Member institution \_\_\_\_\_

**Make check/money order payable to:** The Children's Medical Center - PCEO

**Mail to:** Newborn Medicine Office/ PCEO Program

One Children's Plaza

Dayton, Ohio 45404-1815

*See class details for registration deadline.  
Your are confirmed for offering unless  
otherwise notified*

FOR OFFICE USE ONLY
Received _____
Check # _____ Amount _____

**12/10**



**December 2011**

 **The Website out @**  
[www.PCEORegion2.org](http://www.PCEORegion2.org)